

**TECHNICAL INFORMATION · SERIES 8810 · FROSTED GLASS CAST**

**Description**

Cast PVC film for high quality glass decoration with very good weather resistance and UV stability. The reduced gloss and the roughly structured surface inhibits undesired reflection.

**Release paper**

Special polyester film, 100 micron

**Adhesive**

Solvent polyacrylate, permanent adhesive

**Area of use**

Developed for glass areas, to achieve a hoar-frost or freezing effect; especially for the decorative designing of shop windows and glass doors.

Suitable for manufacturing on cutting systems. Wet application is recommended.

**Technical data**

<b>Thickness*</b> (without protective paper and adhesive)	80 micron
<b>Dimensional stability</b> (FINAT TM 14)	adhered to glass, no measurable shrinkage in cross direction, in length 0.1 mm max.
<b>Temperature resistance</b>	adhered to glass, -40°C to +90°C, no variation
<b>Resistance to cleaning agents</b>	adhered to glass, 8h in washcalics (0,5% householdcleaning agents) in room temperature and in 65°C, no variation
<b>Adhesive power*</b> (FINAT TM 1, after 24 h)	16 N/25 mm glass 16 N/25 mm acrylicglass
<b>Tensile strengt</b> (DIN EN ISO 527)	along: min. 19 MPa across: min. 19 MPa
<b>Elongation at break</b> (DIN EN ISO 527)	along: min. 40 % across: min. 40 %
<b>Shelf life**</b>	2 years
<b>Application temperature</b>	min. + 8°C
<b>Service life by specialist application</b> under vertical outdoor exposure (normal climate of Central Europe)	7 years

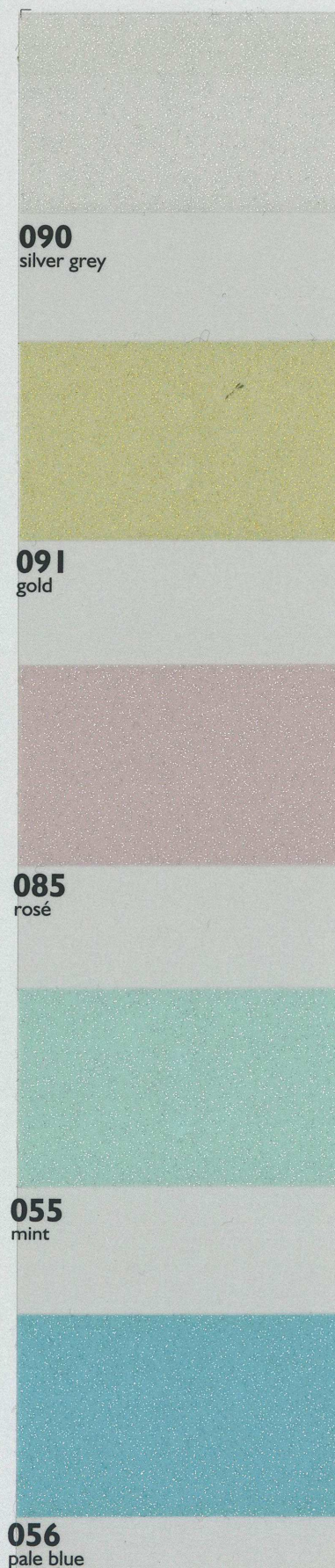
\* average \*\* in original packaging, at 20°C and 50% relative humidity

**Attention:**

Surfaces to which the material will be applied must be thoroughly cleaned from dust, grease or any contamination which could affect the adhesion of the material. Furthermore the application informations published by ORAFOL are to be considered.

The statements in this information sheet are based upon our knowledge and practical experience. This data is intended only as a source of information and is given without guarantee and does not constitute a warranty. Due to the wide variety of possible uses and applications customers should independently determine the suitability of this material for their specific purpose, prior to use.

**8810** Frosted Glass Cast



**8510** Etched Glass Cal

Fine structure

